

PRODUCT NUMBER
77315-YXX-XXLF

INDICATES THE PRODUCT IS RoHS
COMPATIBLE, SEE NOTE 5
TOTAL NB OF POSITIONS 01 TO 36
PACKAGING, NOTE 3
PIN STYLE SEE SHEET 2
PLATING, SHEET 2

PRODUCT NUMBER
77315-YXX-36SPLF

Semi finished P/N for BOM

NOTES:

1. TOLERANCE "Z" DEPEND UPON PIN OVER
LENGTHS "A" AND "B".

LENGTH	TOLERANCE	LENGTH	TOLERANCE
UP TO 10mm	0.4	UP TO 14mm	0.45
UP TO 18mm	0.5	UP TO 22mm	0.55
UP TO 26mm	0.6	OVER 26mm	0.65

2. 9N MIN RETENTION IN EITHER DIRECTION

3. PACKAGING:

— POLYBAG PER SPAF1099
"V" BLIBOX PACK FOR VALEO PER SPAF0341

4. TO DETERMINE DIMENSIONS :

N = NUMBER OF POSITIONS
EXAMPLE : 8 POS $N \times 2.54 = 20.32\text{mm}$

5. RoHS COMPATIBLE PRODUCT SPECIFICATIONS

- a - PLATING:

— "LF" MEANS THE PRODUCT IS LEAD-FREE,
2µm MINIMUM MATTE TIN OVER 1.27µm
MINIMUM NICKEL UNDERPLATE.

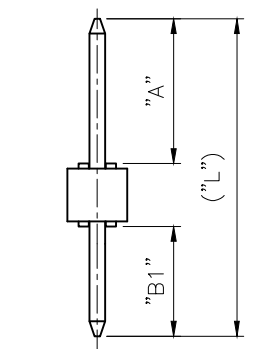
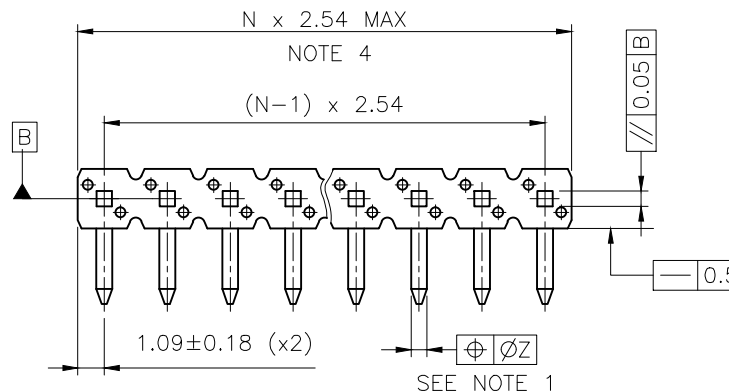
- b - MANUFACTURING PROCESS COMPATIBILITY

— THE HOUSING WILL WITHSTAND EXPOSURE TO
260°C ±5°C SOLDER BATH TEMPERATURE FOR
5 SECONDS IN A WAVE SOLDER APPLICATION
WITH A 1.6mm MIN THICK CIRCUIT BOARD.

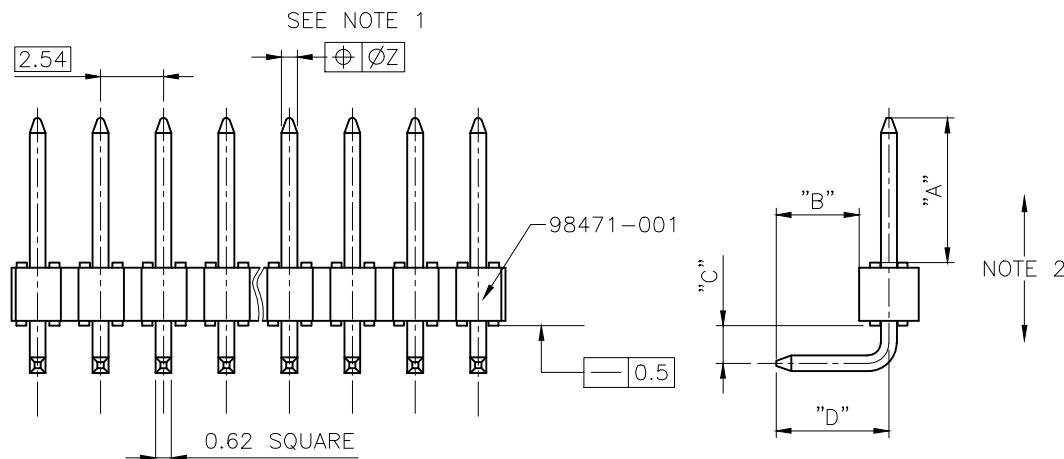
- c - LABELLING:

— MEETS PACKAGING SPECS AS PER GS-14-920

- d - LEGAL STATEMENT : SEE GS-22-008



END VIEW OF HEADER
BEFORE BEING BENT



mat'l. code SEE P/N	surface ISO 1302	tolerance ISO 406 ISO 1101	projection mm	product family BERGSTIK
ltr ecn no dr date	tolerances unless otherwise specified	angles linear	scale 5:1	title UNSHR.HEADER RA SR TMT
AL F12-006Q LMU 12.06.07				dwg no 77315
AM F12-009S LMU 12.10.25				sheet 1 of 2
AN B-15093 JCO 13.06.28				size A3
dr D LEGRAND 99.01.12				type INSPECTION Drawing
enr COMPAGNON J 99.01.12				
chr COMPAGNON J 99.01.12				
appd JMC 99.01.12				
sheet revision AN AL				
index sheet 1 2				

A

B

C

D

1

1

1

1




77315-SXX-36SPLF	0.38μm GXT FULL PLATED		77305-5XXA
77315-GXX-36SPLF	0.76μm GXT FULL PLATED		77305-6XXA
77315-8XX-36SPLF	0.38μm Au/GXT	2.0-7.5 Sn MATTE	77310-1XXLF
77315-4XX-36SPLF	4μm Sn FULL PLATED		77305-3XXA
77315-2XX-36SPLF	1.27μm Au	2.0-7.5 Sn MATTE	77310-2XXLF
77315-1XX-36SPLF	0.76μm Au/GXT	2.0-7.5 Sn MATTE	77310-1XXLF
77315-1XXS 36SPLF	0.76μm Au/GXT	GOLD FLASH	77310-3XX

77315-SXX-XXLF	0.38μm GXT FULL PLATED		77305-5XXA
77315-GXX-XXLF	0.76μm GXT FULL PLATED		77305-6XXA
77315-8XX-XXLF	0.38μm Au/GXT	2.0-7.5 Sn MATTE	77310-1XXLF
77315-4XX-XXLF	4μm Sn FULL PLATED		77305-3XXA
77315-2XX-XXLF	1.27μm Au	2.0-7.5 Sn MATTE	77310-2XXLF
77315-1XX-XXLF	0.76μm Au/GXT	2.0-7.5 Sn MATTE	77310-1XXLF
77315-1XXS XXLF	0.76μm Au/GXT	GOLD FLASH	77310-3XX

77315-SXX-XX	0.38μm GXT FULL PLATED		77305-5XXA
77315-GXX-XX	0.76μm GXT FULL PLATED		77305-6XXA
77315-8XX-XX	0.38μm Au/GXT	4μm SnPb	77310-1XX
77315-4XX-XX	4μm Sn FULL PLATED		77305-3XXA
77315-2XX-XX	1.27μm Au	4μm SnPb	77310-2XX
77315-1XX-XX	0.76μm Au/GXT	4μm SnPb	77310-1XX
77315-1XXS XX	0.76μm Au/GXT	GOLD FLASH	77310-3XX

PLATING CODE	CONTACT AREA	REMAINDER	PIN PLATING
	PLATING THICKNESS OVER 1.27 μ m Ni		

PIN STYLE	PRODUCT DEFINITION					PIN/CARRIER	
	"A" ±0.15	"B" ±0.3	"B1" ±0.2	"C" ±0.2	"D" ±0.3	77310 OR 77305	("L") REF
01	5.72	2.57	4.84	1.4	3.77	−X04	13.10
02	5.72	5.11	7.44	1.4	6.31	−X77	15.7
03	5.72	7.65	9.89	1.4	8.85	−X12	18.15
07	5.72	5.11	9.89	3.94	6.31	−X12	18.15
13	5.72	3.45	5.57	1.4	4.65	−X39	13.83
18	5.84	3.05	5.12	1.4	4.25	−X07	13.5
20	5.84	2.29	4.42	1.4	3.49	−X17	12.8
22	11.71	3.2	5.81	1.4	4.40	−X42	20.06
24	6.75	2.85	4.93	1.4	4.05	−X53	14.22
25	8.07	3.05	5.29	1.4	4.25	−X63	15.9
26	8.2	12.6	14.56	1.4	13.8	−X86	25.3
27	5.00	3.90	5.96	1.4	5.10	−X07	13.50
28	3.10	3.10	5.16	1.4	4.3	−X01	10.80
29	9.70	2.90	5.91	1.52	4.85	−X68	17.30
30	8.30	4.40	6.46	1.52	5.60	−X68	17.30
31	11.70	2.80	5.42	1.52	4.00	−XXX	19.66
32	8.90	3.05	5.36	1.52	4.25	−X71	16.80
33	10.20	3.05	5.29	1.40	4.25	−XAM	18.00
34	10.00	3.25	5.29	1.40	4.45	−XAM	18.00
35	5.72	12.73	14.94	1.40	13.93	−XCH	23.20
36	N/A						
37	N/A						
38	8.51	3.00	5.21	1.40	4.20	−XHS	16.26
39	9.80	9.30	11.50	1.52	10.50	−XGR	23.80
40	8.13	2.54	7.33	3.94	3.74	−XAM	18.00
41	14.20	3.05	5.36	1.52	4.25	−XCF	22.10

mat'l. code				surface ISO 1302 ✓ ISO 406 ISO 1101		tolerance		projection 		product family BERGSTIK			
litr		ecn no		dr		date		tolerances unless otherwise specified				title	
AK F12-0095		LMU		12.10.25		angles		linear				UNSHR.HEADER RA SR TMT	
AL B-15093		JCO		13.06.28						scaleN/A			
AF F10-0039		LMU		10.07.19		dr		D LEGRAND		99.01.12		 dwg no sheet 2 of size 77315 A3 type INSPECTION Drawing	
AG F10-0095		JCO		10.09.07		engr		COMPAGNON J		99.01.12			
AH F11-0320		LMU		12.01.25		chr		COMPAGNON J		99.01.12			
AJ F12-0060		LMU		12.06.07		appd		JMC		99.01.12			
sheet index		revision											
		sheet											