

NOTES: UNLESS OTHERWISE SPECIFIED.

1. ALL DIMENSIONS ARE IN MM.  
TOLERANCES TO BE  $\pm 0.5$  MM.

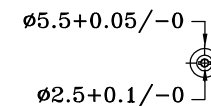
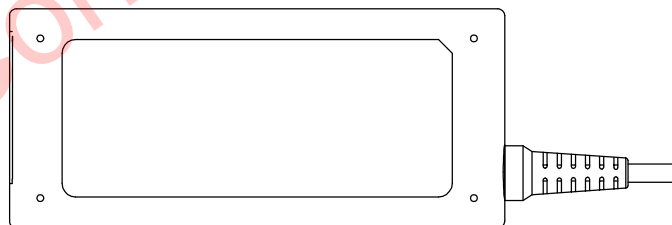
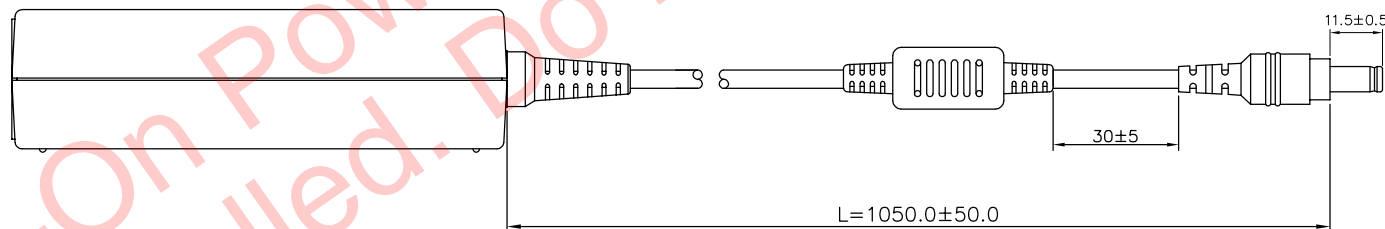
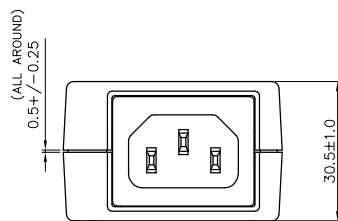
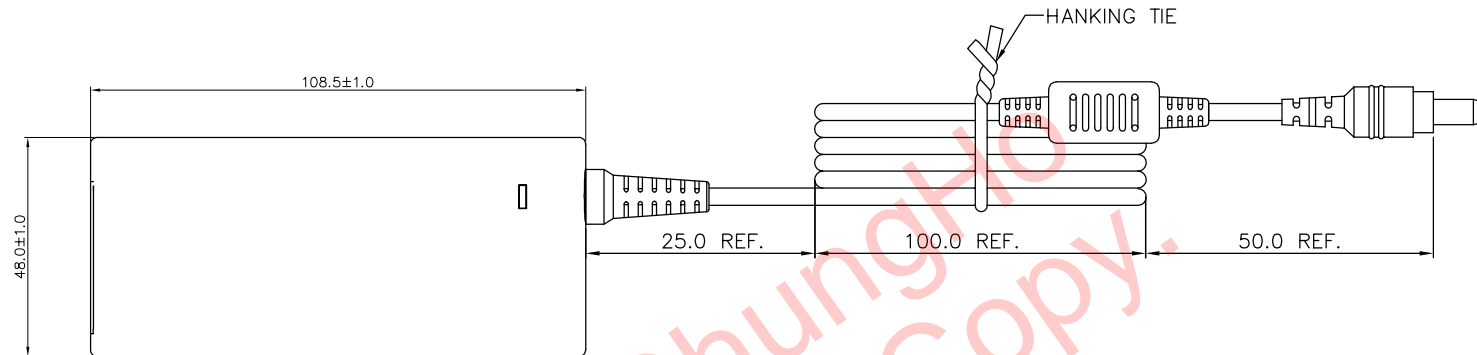
2. PARTS SPECIFIED AS FOLLOWS:

- 2-1. ENCLOSURE:  
\* MEET V-0 FLAMMABILITY.  
\* COLOR: BLACK  
\* TEXTURE: MOLDTECH MT11020.
- 2-2. AC INLET:  
\* IEC 320, C14 CERTIFIED, 3 WAY.  
\* COLOR: BLACK.

- 2-3. DC OUTPUT:  
\* PLUG SHAPE: TUNING FORK TYPE  
\* PLUG INSULATOR: BLACK  
\* PLUG POLARITY:  
\* COLOR: BLACK

- 2-5. ADAPTOR UNIT:  
\* DIMENSIONS MARKED \* MARK MUST BE  
INSPECTED & CONTROLLED STRICTLY  
BY OQC.

J1	WIRE	PLUG
A	WHITE	INSIDE
B	SPIRAL	OUTSIDE



TOLERANCES $\pm$		
ANGULAR	LINEAR	
0.5°	0~6	0.10
	6~30	0.20
	30~80	0.25
	80~180	0.30
	180~315	0.50
	315~800	0.8