

PLEASE CHECK WWW.MOLEX.COM FOR LATEST PART INFORMATION

Part Number: [0638320102](#)
Status: **Active**
Description: Conductor Anvil

Documents:
[RoHS Certificate of Compliance \(PDF\)](#)

General

| | |
|--------------------------------|--|
| Product Family | Application Tooling |
| Series | T2504 |
| Comments | See Tooling Specification (PDF) Above |
| Function | Cutter |
| Geographic Area | Global |
| Level of Automation | Semi-Automatic |
| More Detailed Tech Information | applicationtooling@molex.com |
| Product Name | N/A |
| Survey | www.molex.com/review/apptool_survey.html |
| Tool Type | Anvil |

Material Info

Reference - Drawing Numbers

| | |
|-------------------------------|--------------------|
| Application Tooling Documents | ATS-STANDARD-PARTS |
|-------------------------------|--------------------|

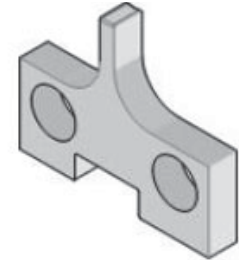


image - Reference only

Series

| | |
|----------------|-------------------|
| EU RoHS | China RoHS |
|----------------|-------------------|

Compliance Status

Not Reviewed

REACH SVHC

Not Reviewed

Low-Halogen Status

Not Reviewed

Need more information on product environmental compliance?

Email productcompliance@molex.com
For a multiple part number RoHS Certificate of Compliance, [click here](#)

Please visit the [Contact Us](#) section for any non-product compliance questions.

Search Parts in this Series

T2504Series

Use With

[0638300400](#) , [0638300470](#) , [0638926000](#) ,
[0638926070](#)