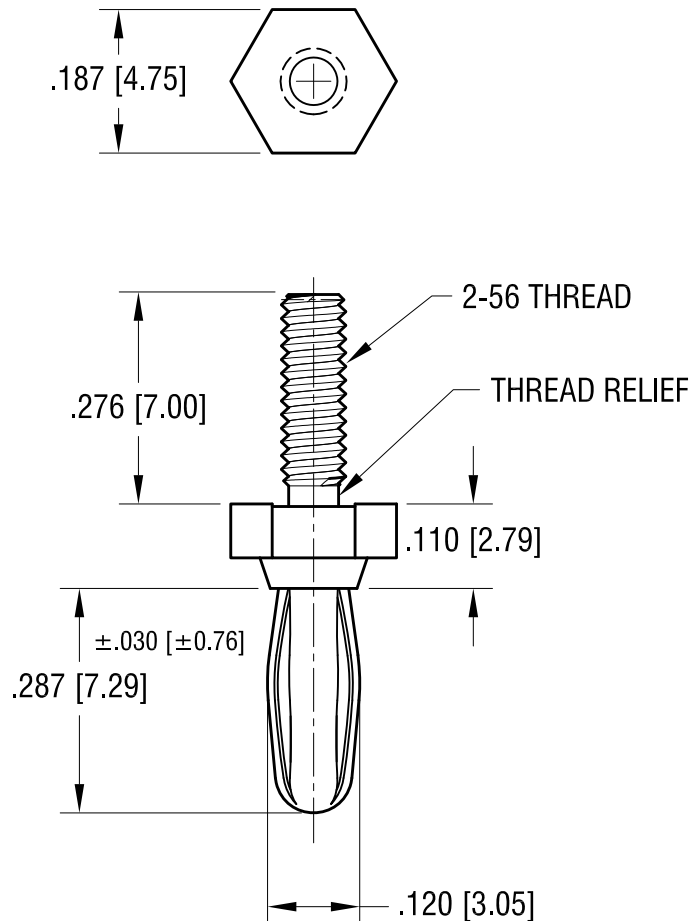


ACTUAL SIZE



NOTE:

1. BODY: MAT'L- BRASS
2. SPRING: MAT'L- BERYLLIUM COPPER

2.23.24 SPECIFY THREAD RELIEF  
CHANGE AS PER ECN 24-040

A

KEYSTONE ELECTRONICS CORP.					
www.keyelco.com ● NEW HYDE PARK, NY 11040● Tel (516) 328-7500					
PART NAME					
BANANA PLUG					
MATERIAL					
AS NOTED					
FINISH  NICKEL PLATE			DRN BY NT		DATE 12.06.11
			APP'D RH		SCALE 4X
TOLERANCES INCH [MM]			CODE  C	DWG NO.  450	
DECIMAL ± .005 [± 0.13 ]					
ANGULAR ± 1°					
UNLESS OTHERWISE SPECIFIED					

DATE

DESCRIPTION

REV.