

DIMENSIONS(mm)						
SIZE	A ^{+0.39 -0.39}	B ^{+0.25 -0.25}	C ^{+0.25 -0.25}	D ^{+0.25 -0.34}	E ^{+0.38 -0.38}	F ^{+0.25 -0.25}
9	30.81	24.99	16.33	7.90	12.55	10.80
15	39.19	33.32	24.66	7.90	12.55	10.80
25	53.04	47.04	38.38	7.90	12.55	10.80
37	69.32	63.50	54.84	7.90	12.55	10.80
50	67.00	61.10	52.20	10.90	15.40	13.30

SPECIFICATIONS:

MATERIALS:

INSULATOR:	GLASS-FILLED NYLON THERMOPLASTIC, UL94 V-0
PROCESS TEMP:	260°C
CONTACTS:	GOLD PLATED BRASS
SHELL:	NICKEL PLATED STEEL
SEALING MATERIAL:	F04 FLEXIBLE ADHESIVE

ELECTRICAL:

RATED CURRENT:	5A
WORKING VOLTAGE:	250VAC
INSULATION RESISTANCE:	1000 MOhms MIN.
CONTACT RESISTANCE:	15 mOhms MAX.

ENVIRONMENT:

OPERATING TEMPERATURE:	-55°C TO +125°C
------------------------	-----------------

MEETS IP67 STANDARDS
(SEE PAGE 3 FOR SEALING DETAILS)

772-EYY-213RYY1

SERIES	772
POSITIONS	EYY
09	
15	
25	
GENDER	2 = FEMALE
TERMINATION	1 = DIP SOLDER
SHELL PLATING	3 = NICKEL
HARDWARE OPTIONS	00 = NO HARDWARE 01 = 0.065" CLINCH NUT, BOARD SIDE 05 = 0.237" 4-40 BOARD LOCK, BOARD SIDE
PLATING OPTIONS	1 = GOLD FLASH 2 = 30u" GOLD 3 = 50u" GOLD

RoHS COMPLIANT



THESE DRAWINGS AND SPECIFICATIONS ARE THE PROPERTY OF NorComp AND SHALL NOT BE REPRODUCED, COPIED OR USED AS THE BASIS FOR THE MANUFACTURE OR SALE OF APPARATUS WITHOUT WRITTEN PERMISSION.

DRAWN:
P. JENKINS

DATE:
09/04/2008

UNITS = mm

DO NOT SCALE FROM DRAWING

NorComp

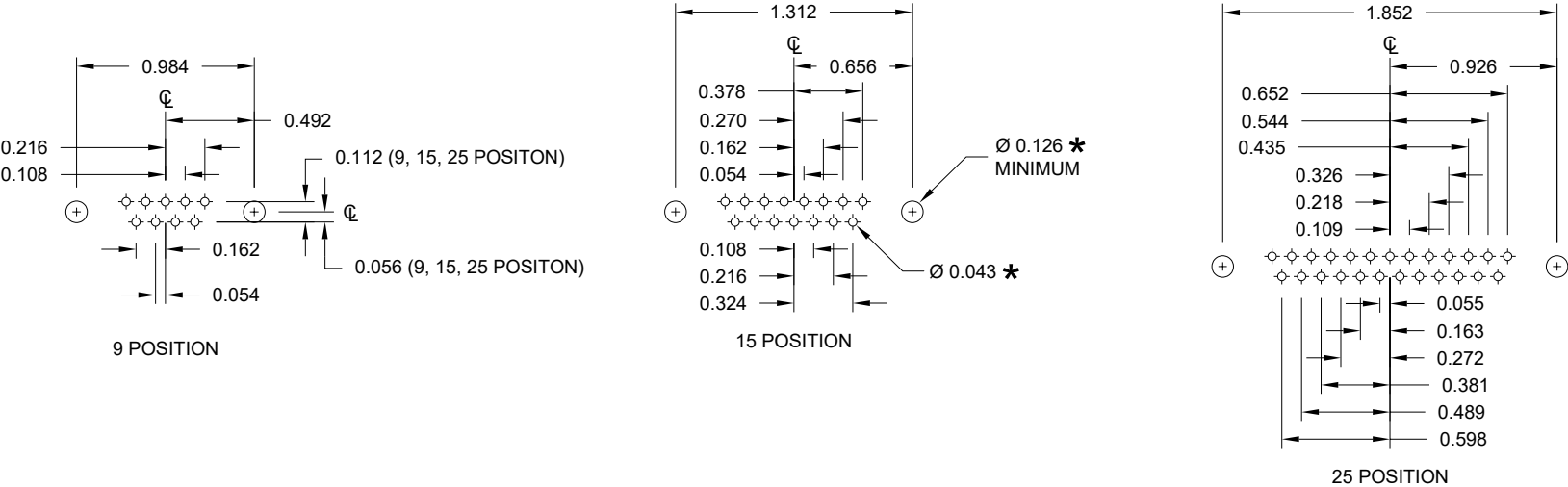
SCALE:
NTS

SHEET OF
1 3

REV
13

DWG NO.

772-EYY-213RYY1



* TYP.
SUGGESTED SIZE
MAY NOT BE SUITABLE FOR ALL APPLICATIONS

RoHS COMPLIANT



THESE DRAWINGS AND SPECIFICATIONS ARE THE PROPERTY OF NorComp AND SHALL NOT BE REPRODUCED, COPIED OR USED AS THE BASIS FOR THE MANUFACTURE OR SALE OF APPARATUS WITHOUT WRITTEN PERMISSION.

DRAWN:
P. JENKINS

DATE:
09/04/2008

UNITS = inch

DO NOT SCALE FROM DRAWING

NorComp

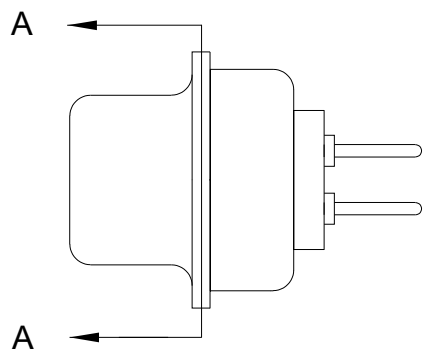
SCALE: NTS

SHEET 2 OF 3

REV 13

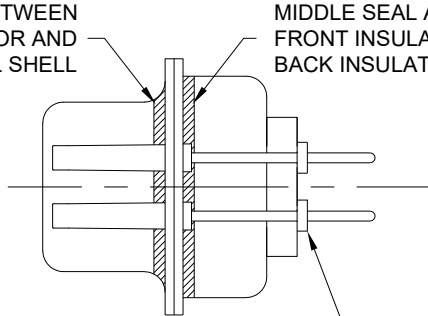
DWG NO. 772-EYY-213RYY1

SEALING PROCESS



FRONT SEAL APPLIED BETWEEN
FRONT INSULATOR AND
FRONT METAL SHELL

MIDDLE SEAL APPLIED BETWEEN
FRONT INSULATOR AND
BACK INSULATOR

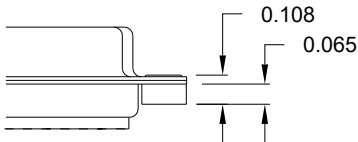


****NOTE****
SEALING MATERIAL
SHALL NOT PROTRUDE
PAST THE CONTACT
SHOULDER

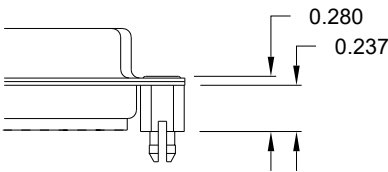
DETAIL A-A

HARDWARE OPTION

01X 0.065" (BOARD SIDE)



05X 0.237" (BOARD SIDE)



RoHS COMPLIANT



THESE DRAWINGS AND SPECIFICATIONS ARE
THE PROPERTY OF NorComp AND SHALL NOT
BE REPRODUCED, COPIED OR USED AS THE
BASIS FOR THE MANUFACTURE OR SALE OF
APPARATUS WITHOUT WRITTEN PERMISSION.

DRAWN:
P. JENKINS

DATE:
09/04/2008

UNITS = inch

DO NOT SCALE FROM DRAWING

NorComp

SCALE:
NTS

SHEET OF
3 3

REV
13

DWG NO.

772-EYY-213RYY1