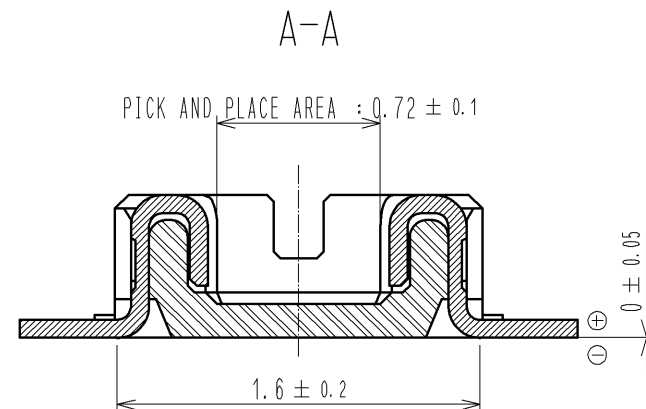
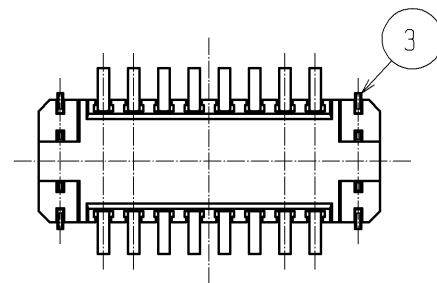
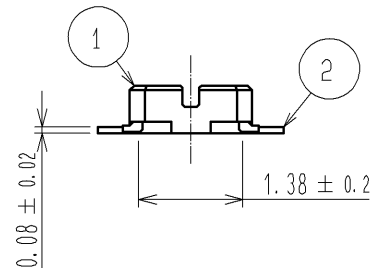
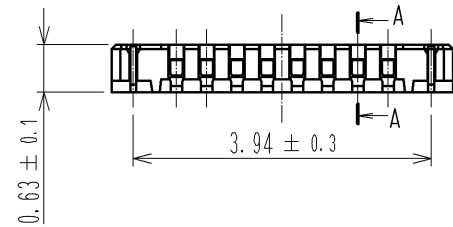
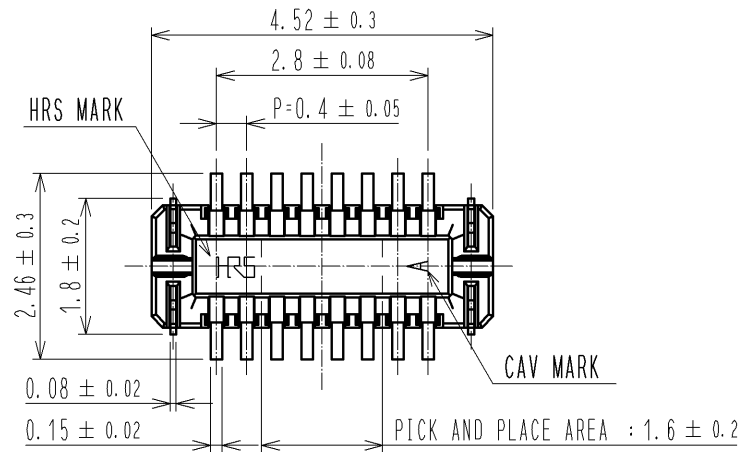
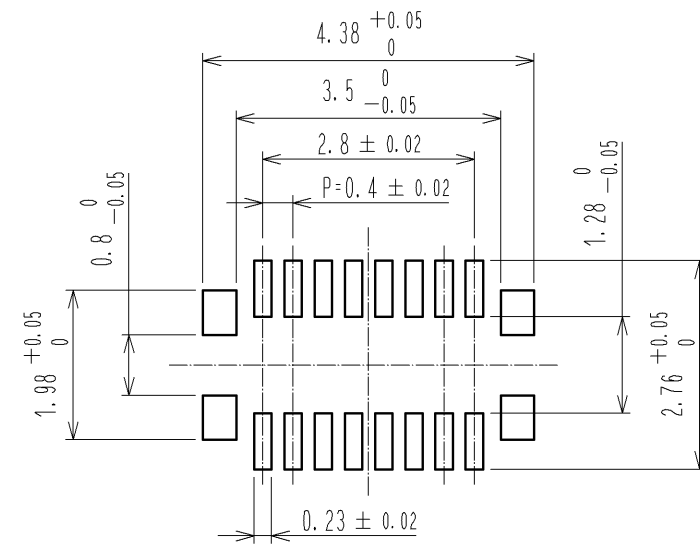


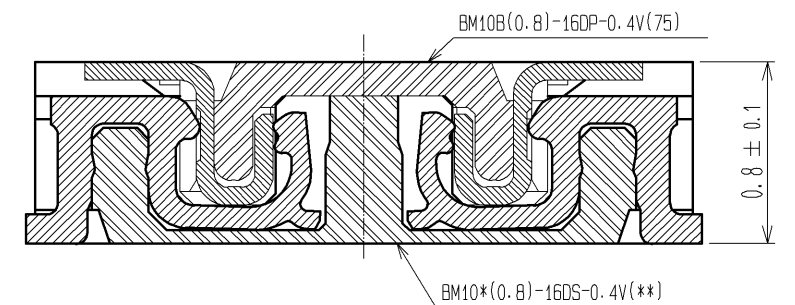
FORM HD0011-2-1



RECOMMENDED PATTERN

RECOMMENDED SOLDER PASTE: THICKNESS 120 μ m

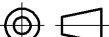


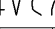
ENGAGEMENT FIGURE

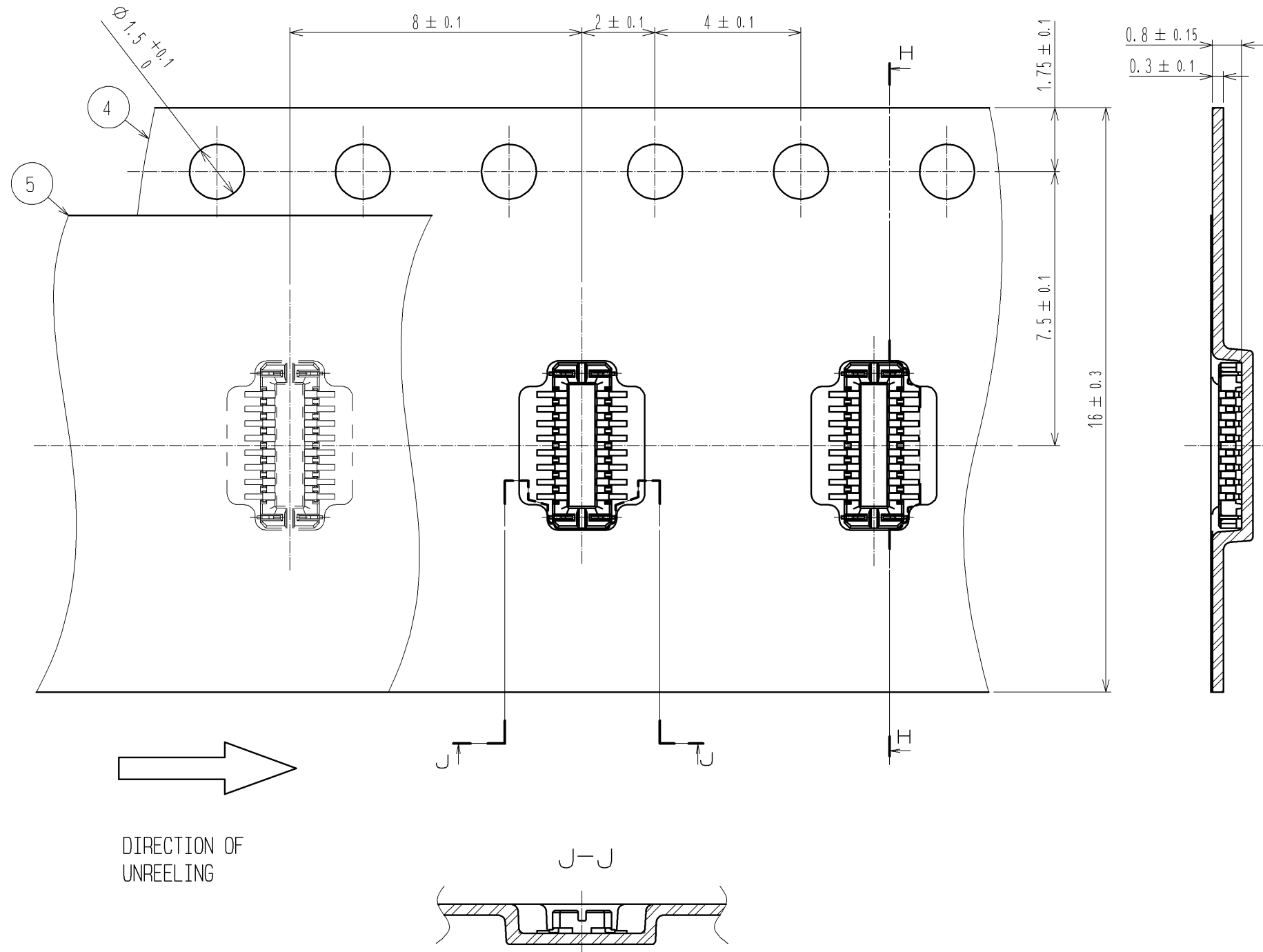


- NOTE 1. ALL LEADS CO-PLANARITY SHALL BE 0.1 MAX.
2. PER REEL : 8000 CONNECTORS.
3. AT THE BEGINNING OF THE REEL, 100 mm AT MIN SHALL BE EMPTY POCKETS.
AT THE END OF THE REEL, 160 mm AT MIN SHALL BE EMPTY.

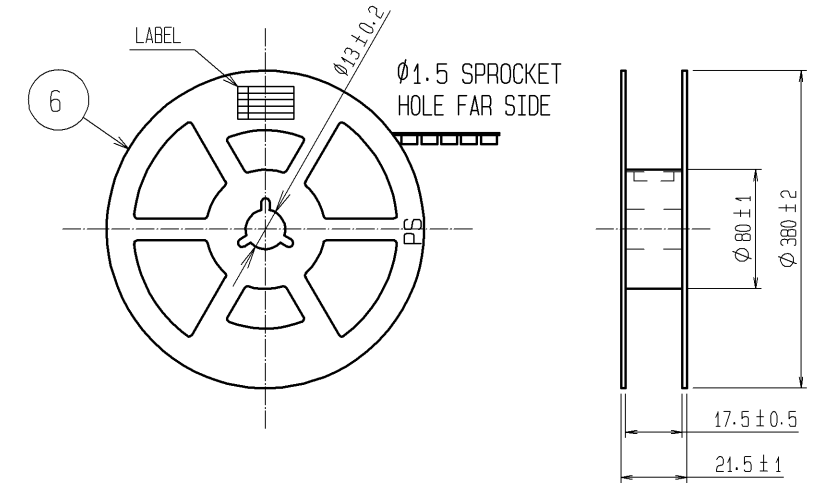
- 4 CONTACT PLATING SPECIFICATIONS.
CONTACT AREA : GOLD 0.1 μ m MIN.
SMT LEAD : GOLD 0.05 μ m MIN.
UNDERPLATING : NICKEL 1 μ m MIN.
(SURFACE : SEALING)

- 5 METAL HOLD DOWN PLATING SPECIFICATIONS.
MOUNTING AREA: GOLD 0.05 μ m MIN.
UNDERPLATING : NICKEL 1 μ m MIN.
6. PEEL FORCE OF COVER TAPE REFERS TO JIS C 0806.

3	PHOSPHOR BRONZE	<div>5</div>	6	PS	PLASTIC REEL (BLACK)					
2	PHOSPHOR BRONZE	<div>4</div>	5	POLYESTER	CLEAR(COVER TAPE)					
1	LCP	UL94V-0. BLACK	4	PS	CLEAR(EMBOSSED CARRIER TAPE)					
NO.	MATERIAL	FINISH . REMARKS		NO.	MATERIAL	FINISH . REMARKS				
UNITS mm			SCALE 10 : 1		COUNT	DESCRIPTION OF REVISIONS		DESIGNED	CHECKED	DATE
 HIROSE ELECTRIC CO., LTD.			APPROVED : KH. IKEDA		09.09.03	DRAWING NO.		EDC3-319210-75		
			CHECKED : TS. MIYAZAKI		09.09.03	PART NO.		BM10B(0.8)-16DP-0.4V(75)		
			DESIGNED : SH. HOSODA		09.08.31	CODE NO.		CL684-6047-0-75		
			DRAWN : SH. HOSODA		09.04.24			<div> 1/2</div>		



STYLE AND DIMENSION OF REEL (FREE SIZE)



DETAIL OF PART NO. LABEL

SUPPLIER	
QUANTITY	
PART NO.	
CODE NO.	
DATE OF MANUFACTURED	
生産月日	年 月 日
図番	CL684-6047-0-75
品名	BM10B(0.8)-16DP-0.4V(75)
納入数量	8000個
納入者	ヒロセ電機(株)

HRS

DRAWING NO.	EDC3-319210-75
PART NO.	BM10B(0.8)-16DP-0.4V(75)
CODE NO.	CL684-6047-0-75

 $\triangle \frac{2}{2}$